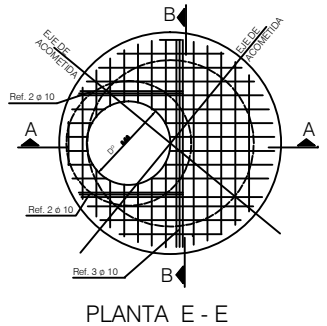
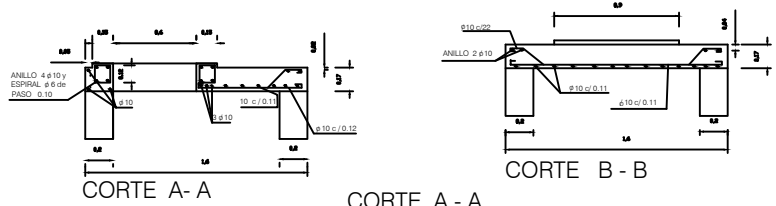
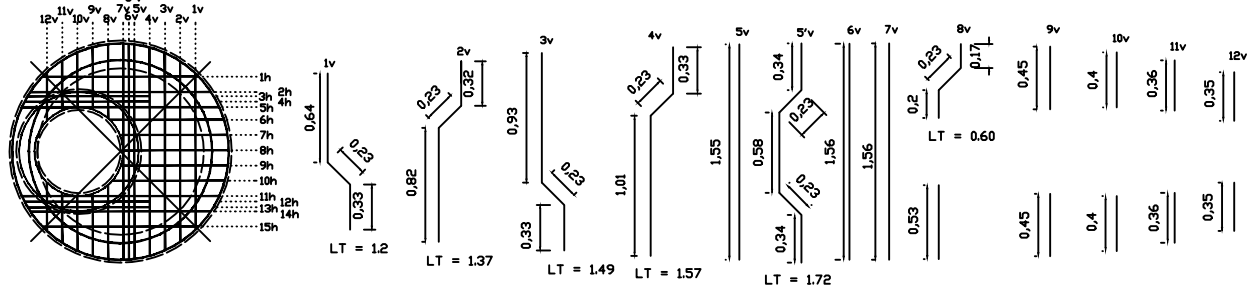
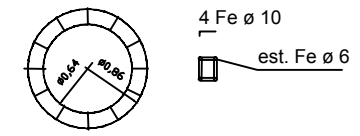


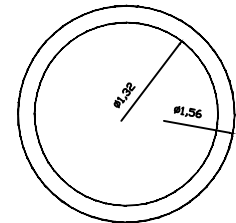
Fe ø 10 - Vertical -
LT = 16.27 m



ANILLO 4 ø 10 - LT = 9,44 m y
estribos ø 6 - LT = 6,36 m,
c/0,15 anillo exterior y c/ 0,11
anillo interior - Cantidad 12



ANILLOS, 2 ø 10, inferior - LT = 9.05 m
ANILLOS, 2 ø 10, superior - LT = 9.05 m



5 barras fe ø 10
1 barras fe ø 6